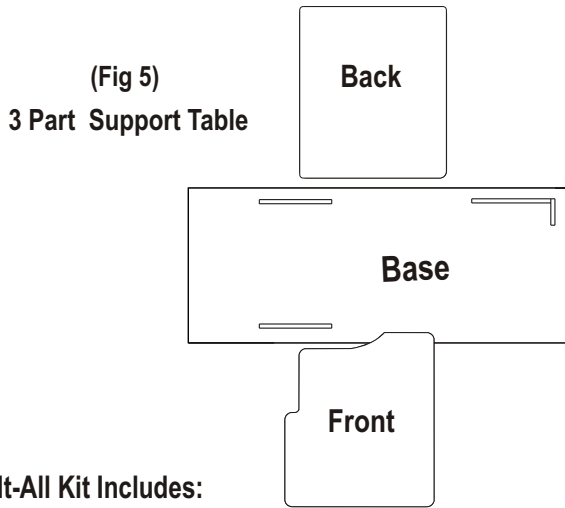
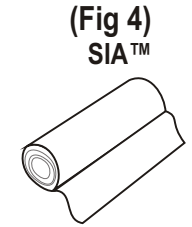
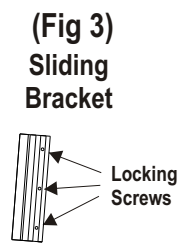
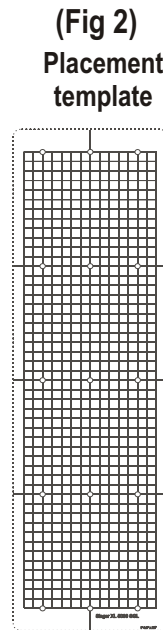
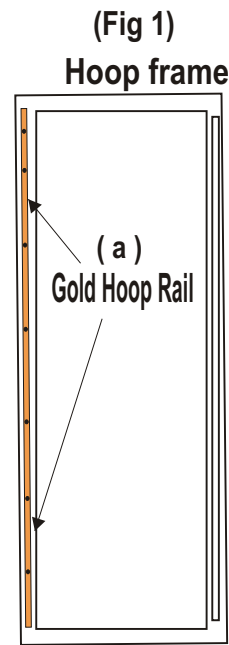


Hoop-It-All™ Super~Giant-L™

The answer to your EXTRA Long embroidery inspirations



Fits Baby Lock Ellegante & Brother 4000D

Hoop-It-All Kit Includes:

- Hoop-It-All™ Frame (Fig 1)
- Alignment Template (Fig 2)
- Sliding Bracket (Fig 3)
- 1 roll SIA™ Pressure-Sensitive Adhesive Tearaway (Fig 4)
- 3 part Support table (Fig 5)
- Illustrated Instructions



www.hoopitall.com

HOOP-IT-ALL INC.

Patent # 5,555,828 Patent # 2,179,119 Other patents pending

About the Super Giant Long Hoop-It-All

The Super-GIANT-L Hoop-it-All (Fig 1) makes it possible to embroider two 180mm x 300mm designs in one hooping from top to bottom without the need of removing the fabric off the hoop frame for a total of 180mm W x 600mm L.

The hoop's unique Sliding Bracket (Fig 3) has a special slot under it for inserting into the hoop's gold rail (a) Fig 1) It also has 3 locking screws attached to it. By loosening these 3 screws you can then slide the hoop frame to any location along the gold rail. When the needle is at the center of the design you have chosen, you then finger tighten the locking screws until they touch the gold rail enough to keep the frame from disengaging from the bracket. This allows you to embroider anywhere within the frame without the need of removing the fabric.

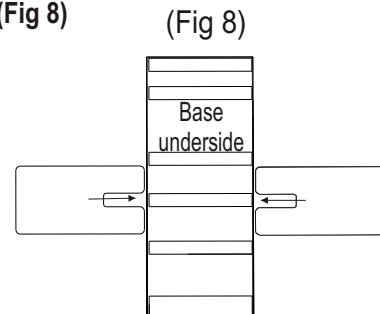
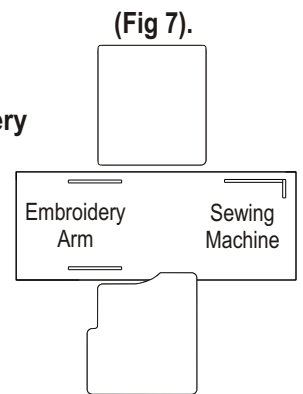
Do not use the holes along the gold rail as indicators to where to lock the hoop frame in place. They are NOT reference points but the end of screws that hold the rail to the frame. Simply tighten the Sliding Bracket's Locking Screws anywhere you desire until they rest on the rail enough that the frame is locked in place.

The paper template (fig 2) helps in placement of designs by indicating the two embroidery fields with their center lines. It is recommended to slide the hoop to the center line of your chosen design and then tighten the Locking Screws before checking the positioning.

About the 3 Part Support Table

Allow adequate room in the front (including your body) and back of machine to prevent any interference as the hoop moves forward and backward. Test clearance before starting to embroider by sliding the hoop frame all the way back and then all the way forward.

- 1) Place table base on a flat surface.
- 2) Place sewing machine and embroidery arm on top of Base Top (Fig 7).
- 3) Slide the Front and Back Table tops into center opening on underside of Table Base. (Fig 8)



Stabilizing Fabric for Embroidery

Cut a piece of Hoop-It-All's **FaBond™** tear-away stabilizer larger than the embroidery design and with a hot iron press it to the back of the fabric. **FaBond™** helps to stabilize fabric and easily removes after embroidery is done. This stabilizer also makes it easier to peel off remaining **SIA™** from back of fabric. **FaBond's™** unique coating cools your sewing machine needle, aiding in keeping it clean and free from any possible adhesive build-up. For extra stability lay one layer of Hoop-It-All's **dSV™** water soluble film on top of the fabric.

Hoop-It-All, Inc. has a large selection of stabilizers to further enhance your embroidery.

dSV™ Water Soluble Film is thicker than other water soluble stabilizers and does not stretch. Place one layer of this on top of fabric for additional stability.

S-dSV™ Adhesive backed Pressure-Sensitive Water Soluble Film. This stabilizer is an exclusive of Hoop-It-All, Inc. It is the same as **dSV™**, but has a thin layer of adhesive applied to it on one side. It can be used in place of the **SIA™** when embroidering on sheers and lightweight fabrics, for cutwork, lacework, and anywhere that you want no unsightly stabilizer to be noticeable.

DryCover-Up™ permanent vinyl Film comes in 16 colors including clear. Use on top of fabric to help keep the fabric from showing through the design.

Check our website: www.hoopitall.com for other Hoop-It-All stabilizers...

Preparing the Fabric

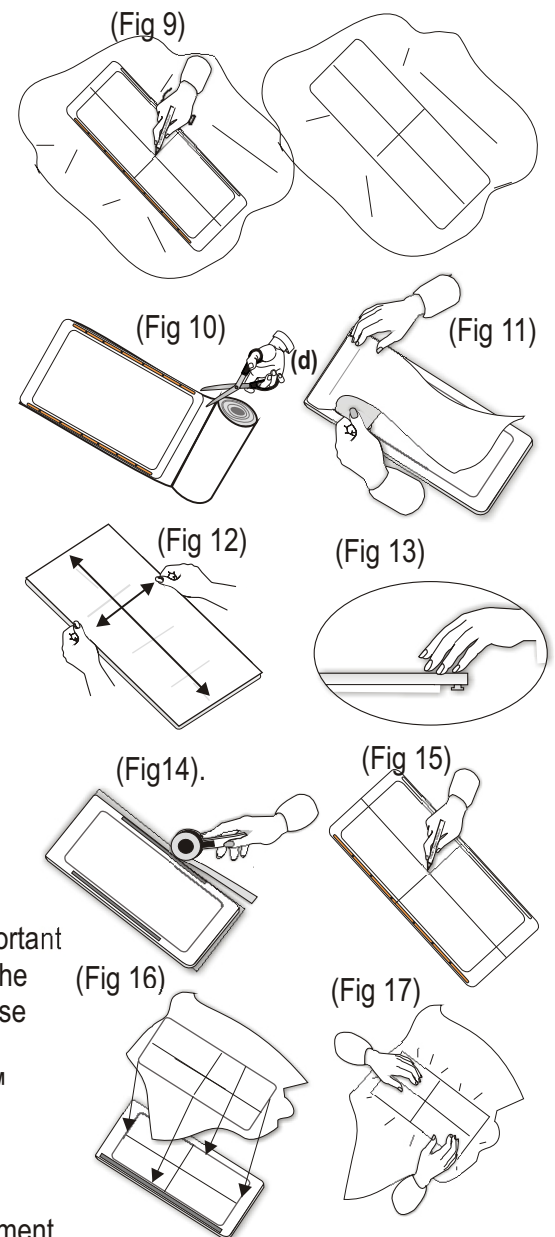
After stabilizing place the frame on top of the fabric (Fig 9) where the embroidery will be sewn. Using a chalk marker or water soluble pen mark center lines on the fabric across the entire opening of the frame and trace around the inner frame edge to help with placement on the hoop. Match the center lines on the paper Placement Template (Fig 2 front page), with those marked on the hoop frame. At the same time become familiar with the Placement Template.

Preparing the Hoop-It-All™ for Embroidery

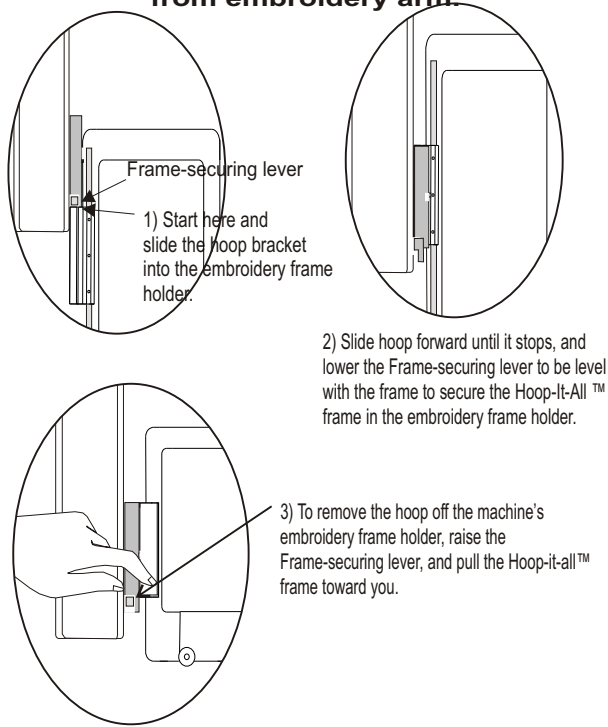
- 1) Place hoop frame face-down on a flat surface.
- 2) Cut a piece of **SIA™** 23" long (Fig 10), from the roll provided in your kit
- 3) Slowly peel back 2" to 3" of release liner (paper backing on **SIA™**) and attach adhesive side down to backside of hoop frame on one end. (Fig 11)
- 4) Start pulling release liner off while pressing **SIA™** stabilizer to the sides and lower rim of hoop frame (Fig 12) making sure it is taut.

Be careful not to stretch the **SIA™** too tight or the frame will bow.

- 5) Hand press the **SIA™** adhesive tear-away stabilizer firmly along entire surface of hoop frame, to ensure it adheres properly. (Fig 13)
- 6) Place hoop on a cutting mat and carefully cut away any excess **SIA™** (Fig 14) stabilizer extending out from edges of hoop frame with a rotary cutter. It is important that the **SIA™** does not interfere with the movement of the Sliding Bracket as the machine senses the hoop. Any excess **SIA™** around the hoop frame could cause the machine not to recognize the hoop.
- 7) Place hoop face up on a flat surface and draw center lines directly on the **SIA™** (Fig 15) to help with placement. Use the marks on hoop frame as a guide.
- 8) Lay fabric over **SIA™** matching the lines you traced of the inside edge of hoop frame, with the frame's inner edge. (Fig 16) Match cross lines drawn on **SIA™** with those drawn on fabric. A light box under the hoop is also helpful with placement.
- 9) Using a gentle pressure, smooth entire surface of fabric from center out securing fabric to **SIA™** adhesive (Fig 17).



Placing & removing Hoop-It-All™ from embroidery arm.



Frame-securing lever

1) Start here and slide the hoop bracket into the embroidery frame holder.

2) Slide hoop forward until it stops, and lower the Frame-securing lever to be level with the frame to secure the Hoop-It-All™ frame in the embroidery frame holder.

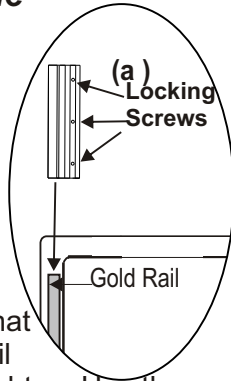
3) To remove the hoop off the machine's embroidery frame holder, raise the Frame-securing lever, and pull the Hoop-It-All™ frame toward you.

Attaching Bracket to Hoop Frame

1) Loosen, but do not remove, the 3 Locking Screws on bracket. (a)

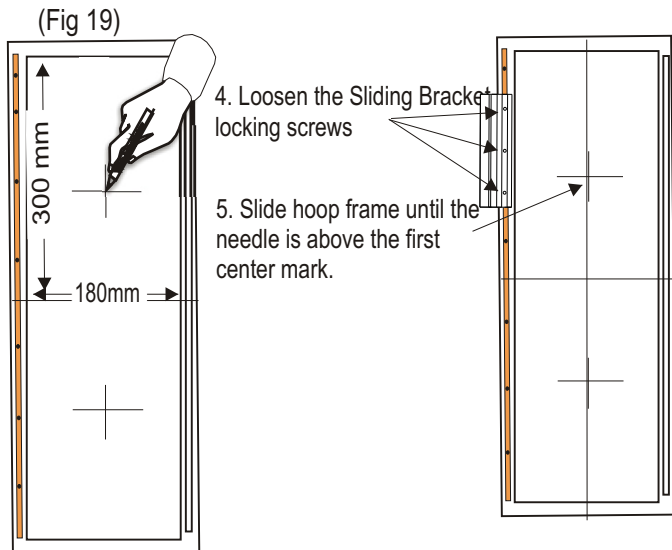
2) Line up the slot located under bracket with the gold rail on hoop frame and slide it on.

3) Slide frame until the needle is on the center mark of your chosen design, and finger tighten the 3 Locking Screws so that they are resting on the top of the gold rail and hoop does not move. Do not over tighten. Use the machine's edit feature to move the needle right or left to the center vertical line.



Planning your design

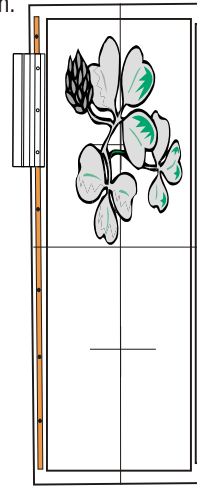
- 1 - Refer to page 1 of these instructions regarding the embroidery field possibilities.
2. Compare the hoop's paper template with the machine's template.
3. Mark center lines for each design (Fig 19).



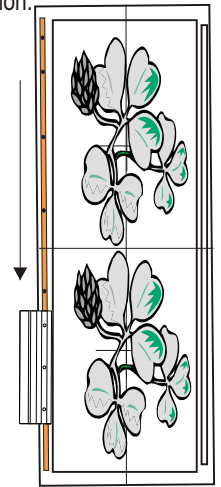
4. Loosen the Sliding Bracket locking screws

5. Slide hoop frame until the needle is above the first center mark.

6. Tighten the Locking Screws and embroider the first design.



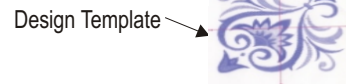
7. Loosen the Locking Screws and Slide frame to the 2nd location.



8. Repeat Step 5 thru 6 and embroider second design.

Embroidering multiple Designs

When possible use a Design Template to help with placing the designs on the fabric.



- 1) Mark placement lines for each design on fabric (Fig 20).
- 2) Match cross lines on Design Template with those marked on fabric.
- 3) Loosen the Locking Screws on hoop bracket and slide the hoop frame until the needle is above the design horizontal cross line.
- 4) Bring needle down and tighten the three Locking Screws on the bracket.
- 5) Raise needle and bring needle to the design vertical cross line using the machine's editing features, and sew first design.
- 6) Continue to place design templates on each marked spot (Fig 22) and repeat steps 1 to 5 above for placement and continue to sew until the entire design is completed.

